



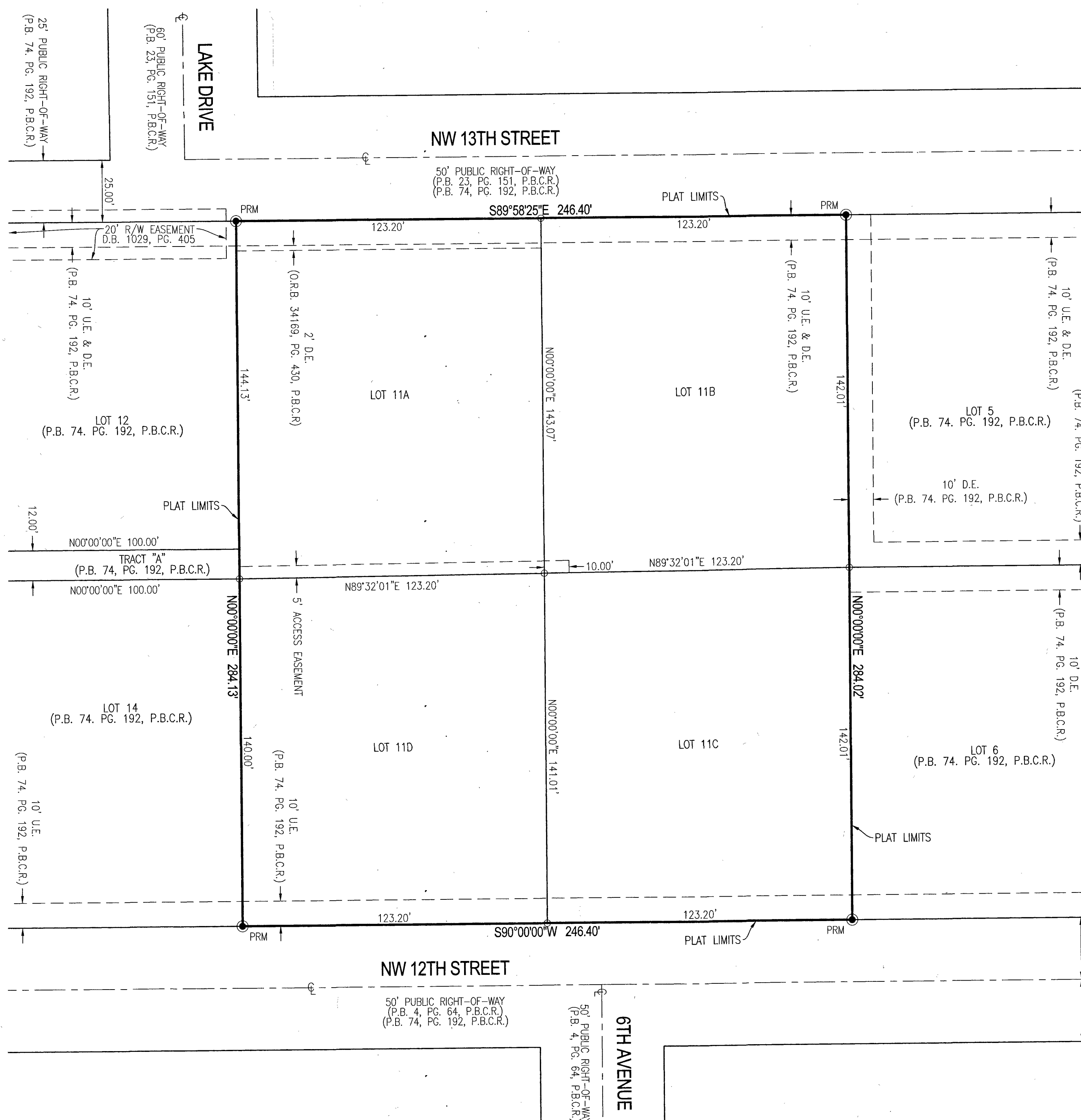
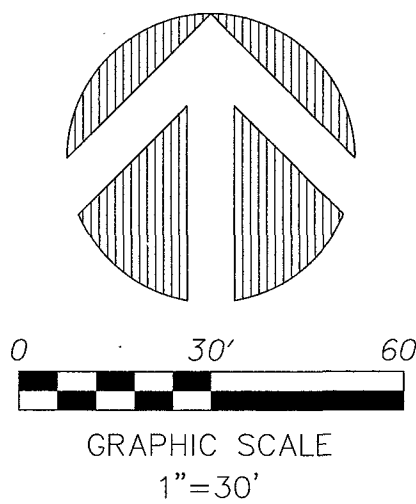
Certificate of Authorization No. LB7264
Prepared by: Jeff S. Hodapp, P.S.M.
947 Clint Moore Road
Boca Raton, FL 33487
Tel: (561) 241-9988
Fax: (561) 241-5182

GRACE'S MANOR

A REPLAT OF LOT 11, "ESTATES MANGO DE PARIS" (P.B. 74, PG. 192, P.B.C.R.) IN SECTION 8, TOWNSHIP 46 SOUTH, RANGE 42 EAST, CITY OF DELRAY BEACH, PALM BEACH COUNTY, FLORIDA.

25

SHEET 2 OF 2



TABULAR DATA

LOT 11A	=	17,691 SF
LOT 11B	=	17,561 SF
LOT 11C	=	17,434 SF
LOT 11D	=	17,310 SF
TOTAL	=	69,996 SF

LEGEND

- ⊕ = CENTERLINE
- ⊙ = PRM - SET PERMANENT REFERENCED MONUMENT
LB#7264. 4"x4" CONCRETE MONUMENT WITH ALUMINUM DISC STAMPED "PRM LB 7264".
- = SET 1/2" IRON ROD & CAP LB#7264

ABBREVIATIONS

- D = DELTA (CENTRAL ANGLE)
- D.B. = DEED BOOK
- D.E. = DRAINAGE EASEMENT
- DIA. = DIAMETER
- F.P.L. = FLORIDA POWER AND LIGHT
- G.U.E. = GENERAL UTILITY EASEMENT
- I.R. = IRON ROD
- I.R.C. = IRON ROD & CAP
- L = ARC LENGTH
- L.B. = LICENSED BUSINESS
- L.S. = LICENSED SURVEYOR
- MON. = MONUMENT
- N.R. = NON-RADIAL
- O.R.B. = OFFICIAL RECORDS BOOK
- O/S = OFFSET
- P.A.E. = PUBLIC ACCESS EASEMENT
- P.B.C.R. = PALM BEACH COUNTY RECORDS
- P.B. = PLAT BOOK
- P.G. = PAGE
- P.C.P. = PERMANENT CONTROL POINT
- P.O.B. = POINT OF BEGINNING
- P.O.C. = POINT OF COMMENCEMENT
- P.R.M. = PERMANENT REFERENCED MONUMENT
- P.S.M. = PROFESSIONAL SURVEYOR & MAPPER
- R = RADIUS
- R/W = RIGHT-OF-WAY
- S.E. = SEWER EASEMENT
- SEC. = SECTION
- S.A. = SQUARE FEET
- SF = SQUARE FEET
- U.E. = UTILITY EASEMENT
- W.E. = WATER EASEMENT

